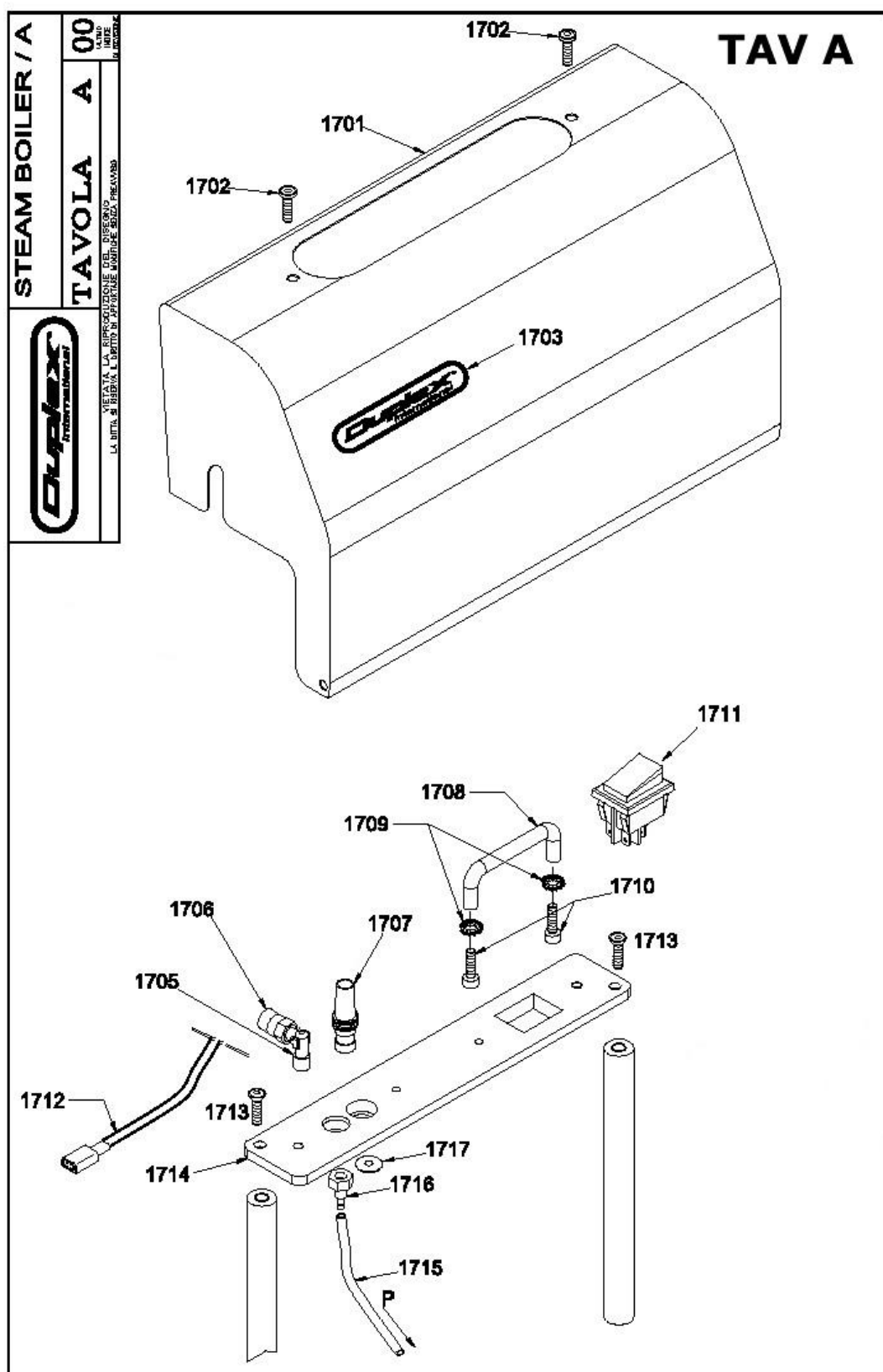


Duplex 620 Steam + steam generator parts list and exploded view

2017



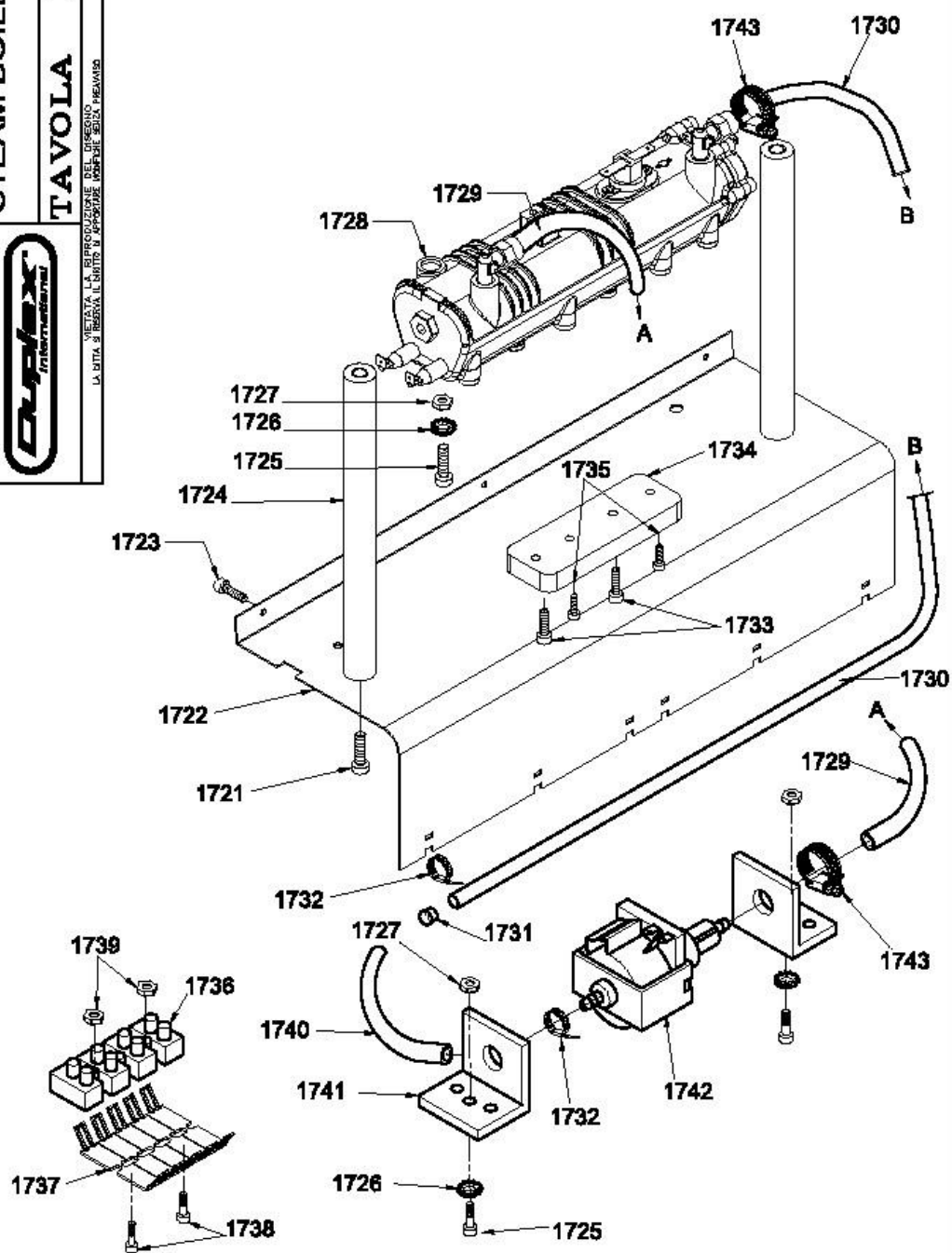
STEAM BOILER / B

TAVOLA B 01



VIETATA LA RIPRODUZIONE DEL DISEGNO
LA DITTA S' RISERVA IL DIRITTO A MODIFICARE SENZA PREAVVISO
IL PRODOTTO

TAV B



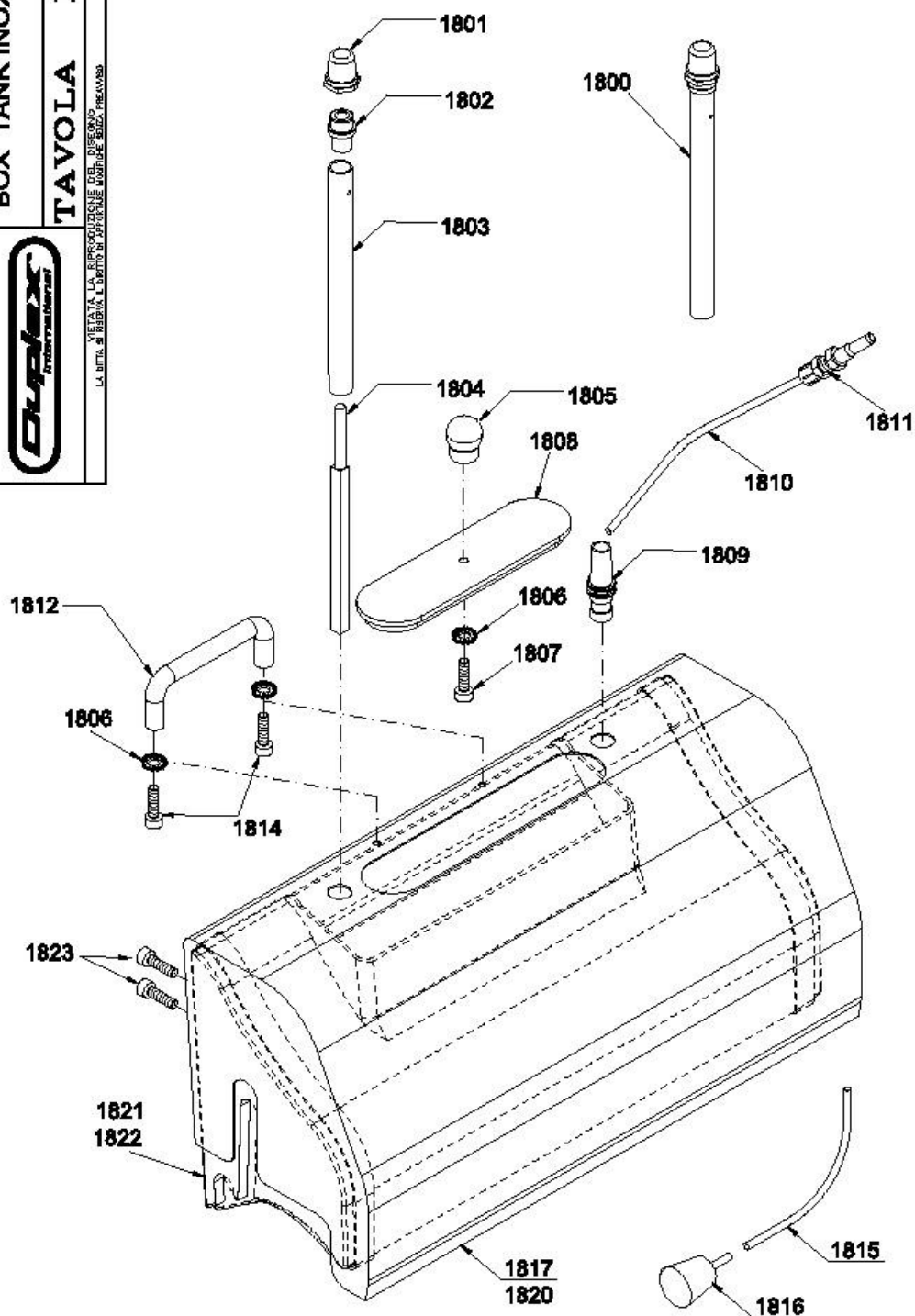
BOX TANK INOX D620

TAVOLA D 00



LA SCELTA DI DUPLEX È GARANZIA DI DURABILITÀ E PRESTAZIONE. LA SCELTA DI DUPLEX È GARANZIA DI DURABILITÀ E PRESTAZIONE.

TAV D





TAV A

floorwashers - carpetwashers
lavapavimenti - lavamoquette

Model 620 STEAM P

Table 1700100 Rev. 1

Pos.	Part Number	Description
1700	62.04.96.724	CASING W/BOILER STEAM PLUS D.620 240V 50HZ
1701	20.34.62.888	CASING FOR BOILER STEAM PLUS+ D 620
1702	51.00.00.038	SCREW TB M6X16 ZN PACK. X 6 PCS
		GF7 V1 MALE CONNECTOR
1705	15.35.00.000	ARTICULATED NIPPLE T/D 1/4 NIC
1706	15.51.00.111	CLUTCH 182 D 1/4" F/STEAM PLUS
1707	04.09.10.000	CONNECTOR
1708	11.50.00.222	HANDLE FOR STEAM TANK
1709	11.55.00.000	WASHER D.4
1710	11.23.00.000	TC SCREW 4X10 ZINC
1711	08.44.11.000	MASK4 RED SWITCH
1712	08.27.00.777	LIGHT WIRE FOR STEAM PLUS
1713	11.18.00.111	SELF TAPPING SCREW4,8x19 INOX F/STEAM PLUS
1714	20.42.77.888	BLACK PLATE F/CASING W/BOILER F/STEAM PLUS
1715	04.30.20.000	TUBE RUBBER WITH CONNECTOR

1716	45.00.04.000	CHROMATE GRAFTING CLUTCH 1/4" 6mm
1717	11.55.00.024	WASHER 24X13X2,8 ZN

Model 620 STEAM P

Table 1700200 Rev. 1

Pos.	Part number	Description	TAV B
1721	11.03.08.111	VITE AUTOF. TC 4,8X19 INOX PER STEAM	
1722	20.62.77.555	SUPPORT PLATE FOR CASING W/BOILER STEAM PLUS D 620	
1723	11.23.00.111	SCREW M. 4X10 INOX	
1724	20.34.77.444	SPACER F/CASING W/BOILER STEAM PLUS	
1725	11.59.11.000	SCREW TC M 4X16 INOX	
1726	11.55.00.000	WASHER D.4	
1727	46.22.46.345	SELF LOCKING NUT M4 INOX	
1728	18.40.00.220	ASSEMBLED BOILER 220V 50HZ 1300W	
1729	04.30.30.000	TEFLON TUBE L=170 OUTPUT PUMP	
1730	20.34.15.222	STEAM INJECTOR FOR STEAM PLUS D620	
1731	51.00.00.025	SCREW ST M5X8 INOX PACK. X 12 PCS	
1732	04.37.00.000	NYLON CLAMP 2,4x60	
1733	11.70.00.000	SCREW TC5X25 INOX	
1734	20.34.77.432	TEFLON THERMAL ISULATING F/BOILER STEAM PLUS	

1735	11.75.00.000	SELF TAPPING SCREW 4,8X13 INOX DIN7981
1736	08.19.44.000	4 PIN TERMINAL BLOCK
1737	08.15.00.000	CABLE CLAMP
1738	11.62.00.000	SCREW TC 3X16
1739	11.62.10.000	NUT M.3
1740	04.30.20.000	TUBE RUBBER WITH CONNECTOR
1741	04.31.00.000	ANTIVIBRATION DEVICE FOR PUMP
1742	08.41.00.300	PUMP NME3
1743	11.72.00.000	CLAMP WITH GRAIN D. 8

Model 620 STEAM P

Table 1700300 Rev. 1

Pos.	Part number	Description	TAV C
1760	18.40.00.240	ASSEMBLED BOILER 240V 50 HZ 1300W	
1763	11.50.00.000	SCREW TC 5X16	
1765	08.40.00.240	ELECTRICAL RESISTANCE D 8 240V 50HZ F RZ 1319/85/4	
1766	45.00.06.000	SECURITY VALVE VITON F/BOILER 1/18" 4/5ATM	

1767	15.39.00.000	ARTICULATED NIPPLE FOR VALVE T/D 1/8"
1768	11.23.00.000	TC SCREW 4X10 ZINC
1770	04.13.00.000	O RING VYTON OR 2.29V (FOR BOILER STEAM PLUS)
1771	15.54.77.000	BENDED NIPPLES WITH BUSH 4X6 1/8"
1772	08.61.00.000	THERMIC LIMIT-SWITCH
1773	11.48.66.000	TOOTHED WASHER D.3
1774	11.48.00.000	TC SCREW 3x6
1775	11.39.01.000	TERMINAL CONTACT
1776	15.34.00.000	SCREW CAP 1/4
1778	04.68.00.000	THERMAL INSULATING 420

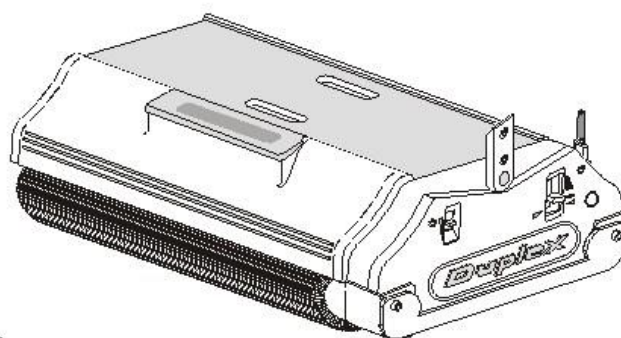
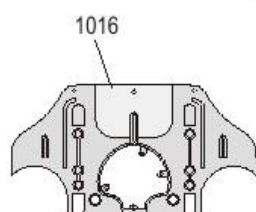
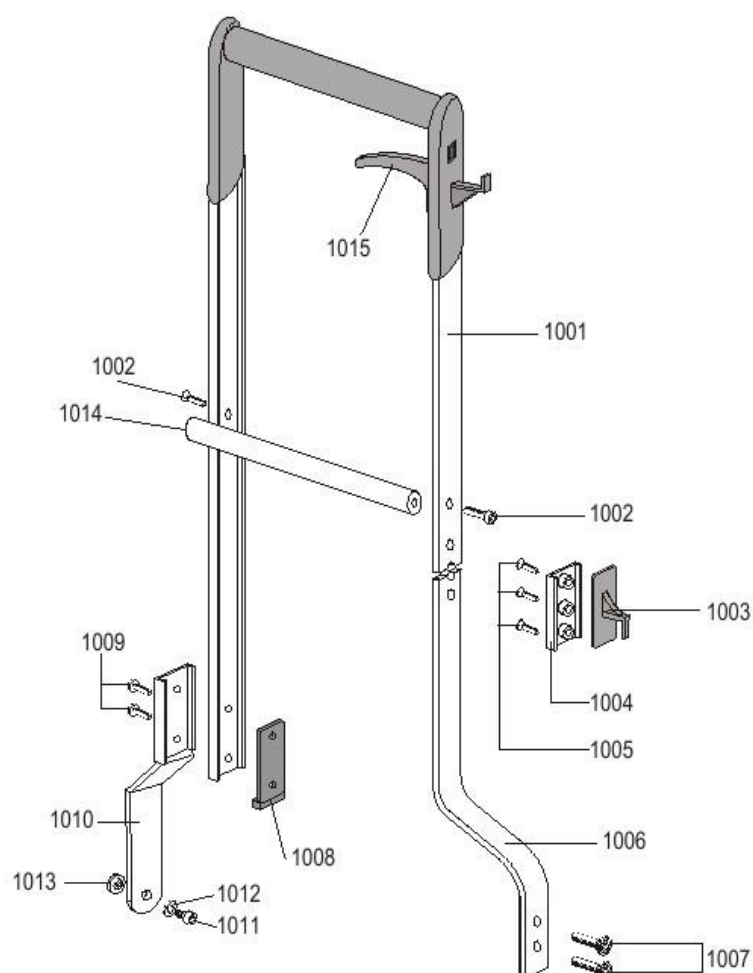
Model 620 STEAM P

Table 1800000 Rev. 1

Pos.	Part number	Description	TAV D
1800	01.13.99.999	FLOAT SET	
1805	45.22.44.000	ROUND KNOB M5 F/STEAM PLUS	
1806	11.55.00.000	WASHER D.4	
1807	11.59.00.000	VITI TC 4x16 PER LEVETTE ZN DIN 7985	
1808	20.34.77.222	BLACK COVER F/TANK STEAM PLUS+	
1809	04.09.10.000	CONNECTOR	
1810	04.30.10.000	RUBBER TUBE 55CM	

1811	15.21.00.000	CLUTCH
1812	11.50.00.888	BLACK HANDLE INT 96 D.8 F/STEAM PLUS
1814	11.71.00.000	SCREW M4x10 CROSS ZN
1815	04.33.00.200	SILICON TUBE 24CM
1820	20.34.62.777	CASING FOR TANK STEAM PLUS + D 620
1821	12.80.62.666	FLUID TANK .620 GREY
1823	11.02.00.000	TC SCREW 4,2X13 ZINC

TAV E



Duplex 420 - 620 Tekna

TAV E

1002	11.61.00.000	Screw tekna 8x20
1003	13.09.10.000	CABLE WRAP, JOINING BITT-HANDLE TEKNA
1004	20.09.02.000	SLEEVE CASING STEAINLESS STEEL TEKNA
1005	11.12.01.000	Screw 8x16 (bitt) tekna
1006	21.05.02.000	ELBOW TEKNA 620
1006	21.05.01.000	ELBOW TEKNA 420
1007	11.13.01.000	Screw tpsce 8x25 Tekna
1008	14.14.01.000	RUBBER INSERT (elbow) tekna
1009	11.61.00.000	Screw 8x20 tekna
1010	20.58.10.000	ELBOW STAINLESS STEEL TEKNA
1011	11.58.00.000	Screw 6x10 Tekna
1012	11.74.00.000	Washer d.6 tekna
1013	01.58.00.000	Stainless steel pin
1014	20.36.11.000	Aluminium handle spacer 620
1014	20.36.00.000	Aluminium handle spacer 420
1016	18.02.30.000	REAR BODY FRAME TEKNA

