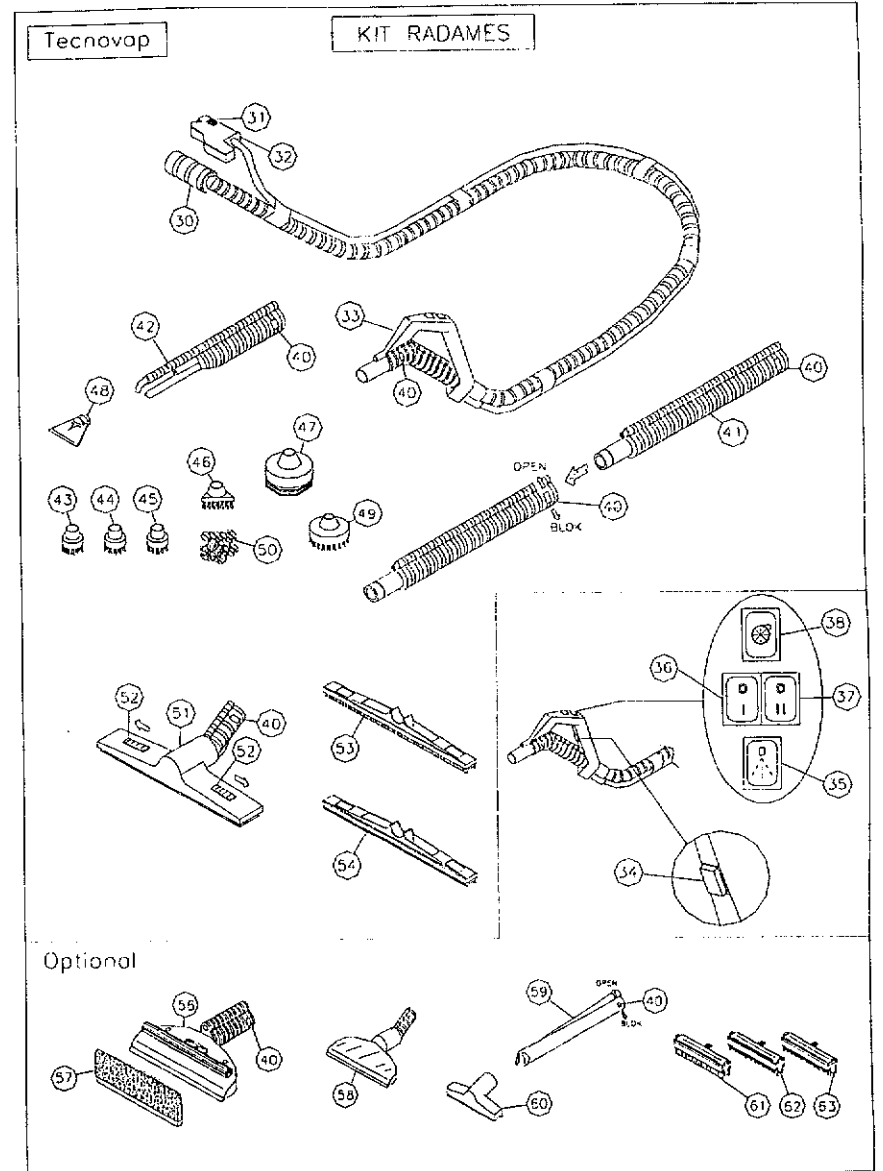
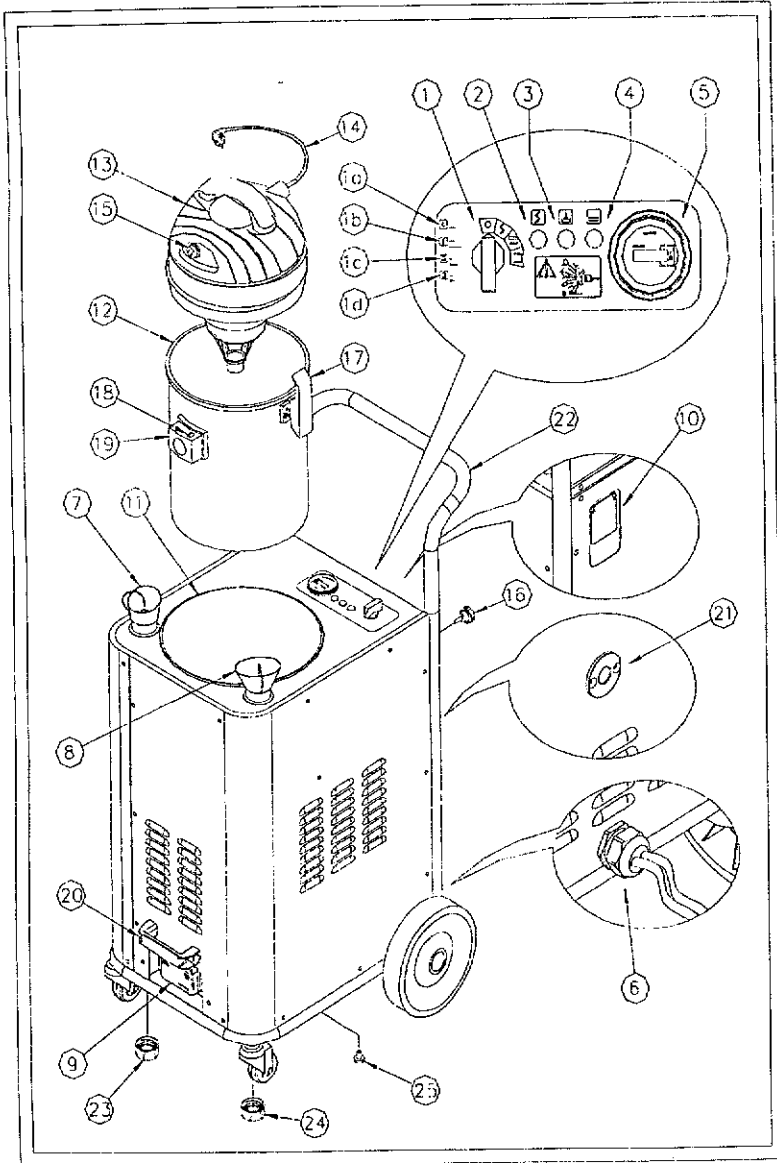
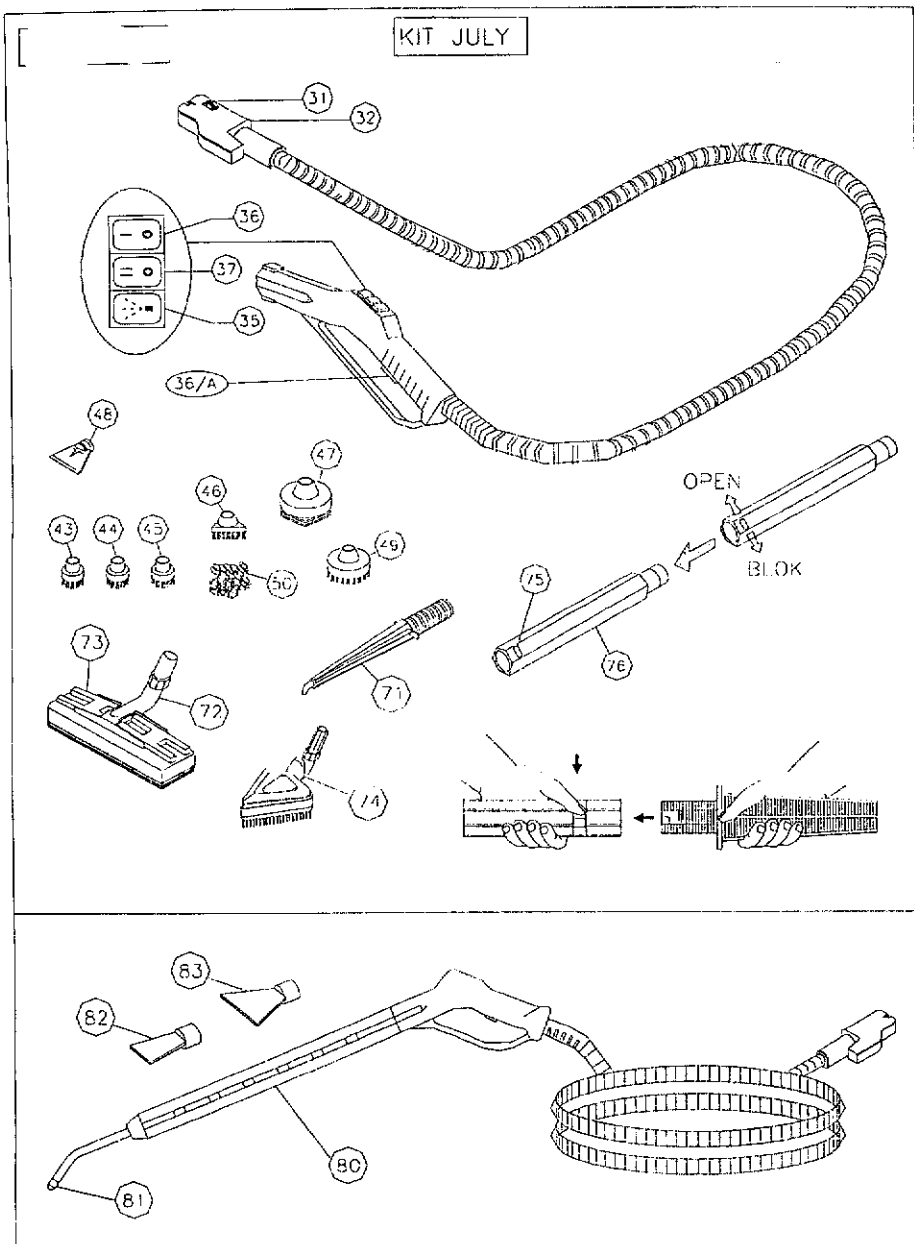


2. TECHNICAL DRAWINGS

STEAM BOX VAC





3. TECHNICAL CHARACTERISTICS

3.1. STEAM GENERATOR

STAINLESS STEEL BOILER (AISI 304)	10 litres
WATER RESERVE TANK:	10 litres
DETERGENT TANK:	10 litres

Mod. 4800

STEAM TEMPERATURE:	165°C
BOILER OUTPUT:	3000 Watt
PRESSURE:	6 bar
STEAM VOLUME:	97 g/min
DETERGENT TEMPERATURE:	90-125°C

3.2. WET VAC

BODY IN POLYESTER	
VACUUM OUTPUT:	1000 Watt
DRUM CAPACITY:	14 litres
DEPRESSION:	1800 mm
AIR FLOW:	170 m ³ / h

3.3. STEAM BOX COMPLETE

BODY IN STAINLESS STEEL
 LOW VOLTAGE HAND CONTROLS 12V
 DUAL POWER CORD

Mod. 4800

POWER SUPPLY:	110 / 120V - 60 Hz
POWER CORD:	5 meters

4. NOMENCLATURE

- | | |
|---|---|
| 1) General switch | 36a) Steam command switch |
| 1a) Position – OFF | 37) Steam adjustment switch – medium |
| 1b) Position – General power | 38) Vacuum switch |
| 1c) Position – Boiler power | 40) Locking latches for accessories |
| 1d) Position – Direct water feed | 41) Extension tubes with O-rings |
| 2) Power indicator light | 42) Turbo lance Steam & Vac |
| 3) "Ready steam" indicator light (green) | 43) Small nylon brush Ø 28 |
| 4) "Low water" indicator light (red) | 44) Small brass brush Ø 28 |
| 5) Hour meter | 45) Small stainless steel brush Ø 28 |
| 6) Power cord with plug | 46) Small triangular brush |
| 7) Water tank w/cap (blue) | 47) Steam plunger |
| 8) Detergent tank w/cap (yellow) | 48) Steam scraper |
| 9) Steam outlet w/ flap cover | 49) Large nylon brush Ø 60 |
| 10) Electric socket for wet vac | 50) Stainless Steel wool pad |
| 11) Vacuum holder | 51) Steam & Vac floor tool for inserts |
| 12) Vacuum drum 14 liters | 52) Latches for blocking inserts |
| 13) Vacuum head w/ motor | 53) Insert squeegee / brush 375 mm |
| 14) Power cord – wet vac | 54) Insert squeegee / squeegee 375 mm |
| 15) Vacuum power switch | 56) Steam & Vac window cleaner (optional) |
| 16) Hand wheel screw for handlebar | 57) Cloth for window cleaner (optional) |
| 17) Clamping hook for vacuum head | 58) Carpet tool (optional) |
| 18) Locking latch – vacuum coupler | 59) Steam & Vac nozzle (optional) |
| 19) Vacuum coupler | 60) Upholstery nozzle (optional) |
| 20) Carrying handle | 61) Insert squeegee / squeegee 145 mm (opt.) |
| 21) Water inlet for direct water feed | 62) Insert squeegee / brush 145 mm (optional) |
| 22) Handlebar | 63) Insert brush / brush 145 mm (optional) |
| 23) Drain cap water tank | 71) Steam lance (optional) |
| 24) Drain cap detergent tank | 72) Rectangular brush (optional) |
| 25) Boiler drain cap | 73) Cloth holder |
| 30) Vacuum hose coupler | 74) Triangular brush (optional) |
| 31) Locking latch steam plug | 75) Locking latches for accessories |
| 32) Steam plug | 76) Extension tube (optional) |
| 33) Steam & Vac hose w/ handgrip | 80) Geyser lance (optional) |
| 34) Steam command switch | 81) Round nozzle tip Ø 2,5 mm |
| 35) Detergent switch – intermittent | 82) Flat nozzle tip 1 cm |
| 36) Steam adjustment switch – minimum | 83) Flat nozzle tip 4 cm (optional) |

5. SAFETY REGULATIONS

IMPORTANT

IT IS RECOMMENDED THAT THE ELECTRIC SUPPLY TO THIS MACHINE SHOULD INCLUDE EITHER A RESIDUAL CURRENT DEVICE THAT WILL INTERRUPT THE SUPPLY IF THE LEAKAGE CURRENT TO EARTH EXCEEDS 30mA FOR 30ms OR A DEVICE, WHICH WILL PROVE THE EARTH CIRCUIT.

WARNING

- PRESSURE JETS CAN BE DANGEROUS IF SUBJECT TO MISUSE. THE JET MUST NOT BE DIRECTED AT PERSONS, LIVE ELECTRICAL EQUIPMENT UNDER PRESSURE, OR THE MACHINE ITSELF.
- STEAM CLEANERS SHALL NOT BE USED BY CHILDREN OR UNTRAINED PERSONNEL.
- TO ENSURE THE MACHINE SAFETY, USE ONLY ORIGINAL SPARE PARTS FROM THE MANUFACTURER OR APPROVED BY THE MANUFACTURER.
- ENSURE THAT THE ELECTRICAL INSTALLATION IS EQUIPPED WITH AN EARTH DEVICE.
- IF NECESSARY, THE POWER CORD MAY BE REPLACED ONLY BY AUTHORIZED PERSONNEL OR SERVICE CENTER.
- PRESSURE HOSES, FITTING AND COUPLINGS ARE IMPORTANT FOR THE SAFETY OF THE MACHINE. USE ONLY HOSES, FITTINGS AND COUPLINGS RECOMMENDED BY THE MANUFACTURER.
- DO NOT USE THE MACHINE IF THE POWER CORD OR OTHER IMPORTANT PARTS OF THE MACHINE ARE DAMAGED, I.E. SAFETY DEVICES, PRESSURE HOSES AND TRIGGER GUN.
- IF AN EXTENSION CORD IS USED THE PLUG AND SOCKET MUST BE OF WATERTIGHT CONSTRUCTION. INADEQUATE EXTENSION CORDS CAN BE DANGEROUS.
- FILL THE WATER TANK WITH WATER ONLY. DO NOT ADD DETERGENTS OR CHEMICAL PRODUCTS IN THE WATER TANK.
- FILL THE DETERGENT TANK ONLY WITH NEUTRAL AND NON FOAMY DETERGENT.
- DO NOT DISASSEMBLE THE ACCESSORIES WHILE THE MACHINE IS SUPPLYING STEAM.
- DO NOT OPERATE ELECTRIC MACHINES WITH WET HANDS.
- NEVER TURN THE MACHINE OVER OR ON ITS SIDE DURING USE.
- FAILURE TO OBSERVE THE REGULATIONS LISTED ABOVE WILL RENDER THE MANUFACTURERS WARRANTY NULL AND VOID ON THE ENTIRE MACHINE.

6. OPERATING INSTRUCTIONS

- (a) After opening the packaging box, insert the main handlebar (22) onto the single bars located on the back of the machine and lock into place with the hand-wheels (16).
- (b) Insert the vacuum plug (14) into the outlet (10) and verify that the vacuum power switch (15) is in ON position.
- (c) Lift the reserve tank caps (7 and 8) and add water (max. 10 litres) to the water tank (blue cap) and appropriately diluted detergent (max. 10 litres) in the detergent tank (yellow cap) of the machine.
- (d) If using detergent please follow the specific instructions: 1 litre detergent for every 10 litres water (about 10% is the detergent percentage), making sure to fill in first the detergent to obtain a better mixing.
- (e) Insert the plug (6) into an electrical outlet, making sure that the voltage and the amperage correspond with those printed on the right side of the machine.

WARNING

WHEN THE WATER TANK IS EMPTY WITH THE RED "LOW WATER" INDICATOR (4) ON, ADD WATER (MAX. 10 LITERS) TO THE WATER TANK (7).

PLEASE NOTE: THIS OPERATION CAN BE CARRIED OUT WITHOUT SWITCHING OFF THE MACHINE.

Refilling of detergent:

Once the detergent tank is empty, proceed as following:

1. Add diluted detergent in the tank (8).
2. Position the minimum steam adjustment switch (36) and activate the steam command switch (34) while pushing the detergent switch (35) until detergent comes out of the accessory.
3. The machine is now ready for use.

6.1. OPERATING THE STEAM BOX VAC WITH KIT RADAMES

Insert the vacuum hose (30) into vacuum hose outlet (19) and the steam plug (32) into the steam outlet (9) found on the front of the machine. Push until the latches (18 and 31) lock into place.

Position the general switch (1) in the boiler position (1c) for the production of steam and wait approximately 3 - 8 minutes (depending on the model) until the green "ready steam" indicator (3) lights up indicating the boiler has reached operating pressure. The switches (36,37 and 38) located on the handle should be in OFF position.

Positioning the switches (36 and 37) on the handgrip will regulate the steam flow as follows: switch (36) minimum flow, switch (37) medium flow, switches (36) and (37) maximum flow. Use the steam command switch (34) to activate steam flow.

The vacuum switch (38) activates the vacuum and can be used simultaneously with steam.

The detergent switch (35) enables you to inject detergent with the steam by activating it for a few seconds at a time to avoid excess liquid with the steam.

To clean with the combination of steam, injection of detergent and vacuum suction, choose the accessory best suited for the job:

The multi-purpose floor tool (51): with appropriate inserts (53,54). Inserts are locked into place by sliding the latches (52) to the OPEN position and hold the insert in place applying a little pressure while sliding the latches in BLOK position. Remember that the command switches on the handle (36-38) must be on OFF position.

Turbo lance steam/vac (42): to be used by itself or with the small round brushes (43-46, 49) or with steam plunger (47) and steam scraper (48) according to the cleaning job to be executed.

If necessary, attach the extension tubes (41) and lock them into place using the clamping units (40) in BLOCK position. Only one tube may be used if desired.

When finished cleaning, it is recommended to vacuum approximately 3 - 5 litres of clean water to rinse the inside of the hose (33) and the suction conduits. Wash and dry all accessories used. Remove the vacuum drum (12) and, after emptying and rinsing it, let it dry before storing it away.

6.2. OPERATING THE STEAM BOX WITH KIT JULY

Insert steam plug (32) into the steam outlet (9) found on the front of the machine. Push until the latch (31) locks into place.

Position the general switch (1) in the boiler position (1c) for the production of steam and wait approximately 3 - 8 minutes (depending on the model) until the green "ready steam" indicator (3) lights up indicating the boiler has reached operating pressure. The switches (36 and 37) located on the handle should be in OFF position.

Activating the switches (36 and 37) on the handgrip will regulate the steam flow as follows: switch (36) minimum flow, switch (37) medium flow, switches (36 and 37) maximum flow. Use the steam command switch to activate the steam flow.

Insert the steam lance (71) by sliding the latch (75) to the OPEN position, lock into place and then slide the latch into BLOCK position.

Follow the same procedure in attaching the rectangular brush (72) or the triangular brush (74) which can be covered with an absorbing cloth by using the gripper (73) to hold the cloth in place. This is a recommended use to clean delicate surfaces (such as precious wood for ex.) or vertical surfaces (in tiles for ex.) etc. The cloth is acting as dirt "extractor" in this case.

7. MAINTENANCE**ATTENTION**

DISCONNECT FROM ELECTRICAL POWER SUPPLY BEFORE CARRYING OUT USER MAINTENANCE. IT IS RECOMMENDED THAT BOILER MAINTENANCE IS CARRIED OUT WHEN THE EQUIPMENT HAS COOLED DOWN. (I.E. SWITCHED OFF FOR AT LEAST 5 HOURS)

7.1 MAINTENANCE OF THE STEAM GENERATOR**ELIMINATING SCALE RESIDUE FROM THE BOILER**

We suggest cleaning the boiler after every 50 hours of use, or also if the machine has remained unused for a long period of time.

Fill half of the water tank (7), about 5 litres, placing a recipient container under the machine and remove the boiler drain cap (25) underneath the machine. Then position the general switch (1) on the general power only (1b). Wait until the "low water" indicator (4) lights up which indicates that the internal cleaning of the boiler has been completed. Unplug the power cord (6) from the electric outlet and proceed by replacing the drain cap (25). Once again plug the power cord (6) into the electric outlet and position the general switch (1) on general power only (1b). It is recommended to activate also the command switch (36) for minimum steam on the handgrip to release the air contained in the empty boiler. Wait for the completed cycle of refilling from the pump (approx. 3 - 5 min.).

The maintenance of the boiler is completed; proceed with the using instructions as described in chapter 6.

We suggest to empty the water tank (7) completely if the machine will not be used for a long period of time.

7.2. MAINTENANCE OF THE VACUUM CLEANER

The vacuum cleaner of the STEAM BOX models does not require any specific maintenance.

7.3. MAINTENANCE OF THE ACCESSORIES

Grease occasionally joints on the accessories and hose extensions.

8. BEFORE REFERRING TO THE TECHNICAL SERVICE

PROBLEM	POSSIBLE CAUSE	REMEDY
MACHINE DOES NOT PRODUCE STEAM AND VACUUM DOES NOT WORK.	LACK OF POWER.	MAKE SURE PLUG (6) IS WELL INSERTED AND THAT THERE IS MAIN POWER TO THE OUTLETS.
THE RED "LOW WATER" INDICATOR (4) LIGHTS UP.	ALL THE WATER HAS BEEN CONSUMED.	REFILL THE WATER TANK (7) WITH CLEAN WATER.
THERE IS NO INJECTION OF DETERGENT.	ALL THE DETERGENT FROM THE DETERGENT TANK (8) COULD HAVE BEEN CONSUMED.	CONTROL THE LEVEL IN THE DETERGENT TANK (8). IF NECESSARY, REFILL THE DETERGENT TANK (8) AS DESCRIBED IN THE INSTRUCTIONS.
SUCTION POWER IS MISSING.	A. LACK OF POWER TO THE VACUUM CLEANER. B. THE VACUUM TUBE IS OBSTRUCTED. C. THE VACUUM DRUM (12) IS FULL OF WATER.	A. MAKE SURE THE SWITCH (15) IS ON AND THE PLUG (14) IS WELL INSERTED. B. CLEAN TUBE AND ACCESSORY USED. C. EMPTY THE VACUUM DRUM (12).
WATER LEAKS THROUGH THE CONNECTIONS OF THE ACCESSORIES.	CHECK THE WEAR OF THE O-RING.	CLEAN AND LUBRICATE THE O-RING WITH GREASE. IF NECESSARY, REPLACE WITH ONE SPARE SUPPLIED.
STEAM DOES NOT COME OUT.	A. BOILER HAS NOT REACHED YET THE OPERATIONAL PRESSURE (GREEN LIGHT (3) IS OFF). B. STEAM COMMAND SWITCHES (36,37) ARE OFF. C. STEAM COMMAND SWITCH (34) HAS NOT BEEN USED.	A. WAIT A FEW MINUTES. B. SWITCH ON THE STEAM COMMAND SWITCHES (36-37). C. USE THE STEAM COMMAND SWITCH (34) TO ACTIVATE STEAM FLOW.
DROPS OF WATER COME OUT OF THE ACCESSORIES.	AT BEGINNING OF WORK WATER CONDENSES IN THE TUBES AND ACCESSORIES DUE TO THE DIFFERENCE IN TEMPERATURE.	AFTER A FEW MINUTES OF USE THIS PROBLEM WILL CEASE. IF IT CONTINUES, PROCEED TO THE CLEANING OF THE BOILER.
ACCESSORIES DO NOT FIT PERFECTLY.	THERE IS DIRT BUILD UP IN THE JOINTS AND LOCK/RELEASE LATCHES (40).	CLEAN AND LUBRICATE THE JOINTS.

9. COMPANY TECNOVAP



9.1. ASSOCIATED AFIDAMP

9.2. EC DECLARATION OF CONFORMITY

DICHIARAZIONE DI CONFORMITA' CE
(EC DECLARATION OF CONFORMITY)

Il sottoscritto
(The undersigned)

FRANCHINI GIULIANO

TECNOVAP SNC
VIA DEI SASSI 1A
37026 PESCAZINA VR

Ancora che le macchine per pulizia a vapore modello
(Certifies that the steam cleaning machine model)
Chattanooga Steam Tech 4800 8400 12000

Risultano conformi alle specifiche delle direttive
(conforms to the specifications of directives)
73/23/EEC - 93/68/EEC - 89/336/EEC - 93/68/EEC - 97/23/CE

Per il controllo della conformità alle sopradette direttive, sono stati seguiti i seguenti standard
(For the checking of conformity to the above directives, the following standards have been used).

Riferimento alle norme armonizzate:
(Reference to harmonized standards):

EN 60335-1
EN 60335-2-79 + A1 + A11
EN 55014
EN 61000-4-2
EN 61000-4-4
ENV 50141
EN 61000-4-5
EN 61000-4-11

PESCAZINA VERONA ITALIA 04-05-2002

FRANCHINI Giuliano

NOTA:

Il rapporto di prova relativo alla compatibilità elettromagnetica da considerarsi è il rapporto F0201 E B2401
relativo al modello Chattanooga - Chattanooga Hi Tech
Viene preso in esame il suddetto rapporto vista la funzionalità dei circuiti elettrici

10. SUMMARY

1. PREFACE	1
2. TECHNICAL DRAWINGS	2
3. TECHNICAL CHARACTERISTICS	6
3.1. STEAM GENERATOR	6
3.2. WET VAC	5
3.3. STEAM BOX VAC COMPLETE	5
4. NOMENCLATURE	6
5. SAFETY REGULATIONS	7
6. OPERATING INSTRUCTIONS	8
6.1. OPERATING THE STEAM BOX VAC WITH KIT RADAMES	8
6.2. OPERATING THE STEAM BOX WITH KIT JULY	9
7. MAINTENANCE	10
7.1. MAINTENANCE OF THE STEAM GENERATOR	10
7.2. MAINTENANCE OF THE VACUUM CLEANER	10
7.3. MAINTENANCE OF THE ACCESSORIES	10
8. BEFORE REFERRING TO THE TECHNICAL SERVICE	11
9. COMPANY TECNOVAP	12
9.1. ASSOCIATED AFIDAMP	12
9.2. EC DECLARATION OF CONFORMITY	12
10. SUMMARY	133